



Presentation to the American Graduate Initiative

January 13, 2014

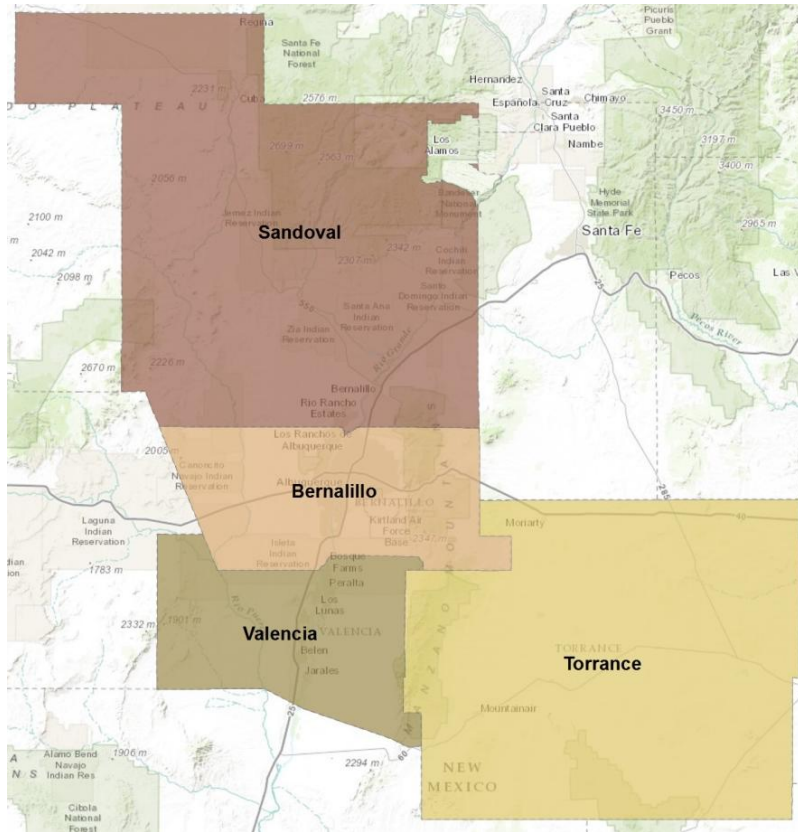


MISSION: GRADUATE UPDATE

Collaborative Action Overview and Next Steps



What is *Mission: Graduate*?



Mission: Graduate is a **cradle-to-career education partnership** in Central New Mexico, which includes the counties of Bernalillo, Sandoval, Torrance, and Valencia.

- These four counties are home to **218,422 children under 18 years of age**, or 42% of all children and youth living in New Mexico in 2010.
- The region is also home to **887,077 people of all age groups**, which is about 43% of New Mexico's total population.

In January 2013, a group of our community's top leaders signed the **Central New Mexico Education Compact**, which articulates a vision, goal, and key objectives for the partnership.

The Central New Mexico Education Compact

- **Vision:** A world-class, seamless, and coordinated education system that provides equitable opportunities for all children and youth to excel and succeed in school, graduate with a postsecondary degree, and enter a career of their choosing in Central New Mexico.
- **Goal:** To add **60,000** new graduates with college certificates and degrees to Central New Mexico by 2020.
- **Objectives:**
 1. Eliminate the achievement gaps that perpetuate inequitable educational outcomes throughout the educational continuum, from pre-school through college
 2. Increase high school graduation rates
 3. Increase college and university enrollment
 4. Increase college and university graduation rates
 5. Align these education objectives with local and regional efforts to recruit and cultivate the growth of new businesses and entrepreneurs to ensure that all graduates have bountiful opportunities for gainful employment



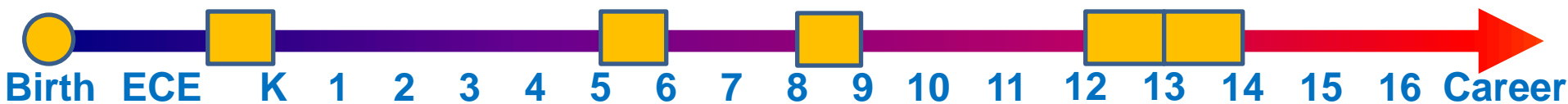
How Will We Reach The Goal Of 60,000 Graduates With College Degrees and Certificates?

1. Focus on helping **adults** complete their college education now.

Over **227,000 working-age adults** in Central NM have finished high school but never started or completed college.

AND

2. Build a **stronger educational pathway** for the children who will be the college graduates of the future.



Students in **grade 6 and below** will graduate from college after 2020. Our work with these age groups is about **long-term change**.

Students in **grade 7 and above** have the potential to **contribute to the 2020 goal** of 60,000 new degrees and certificates.

Guiding Principles

- *Mission: Graduate* will follow four guiding principles as we undertake our activities:
 1. Facilitate stronger partnerships;
 2. Identify effective practices;
 3. Align and increase public and private resources, as appropriate; and
 4. Develop clear career pathways for students to obtain gainful employment.

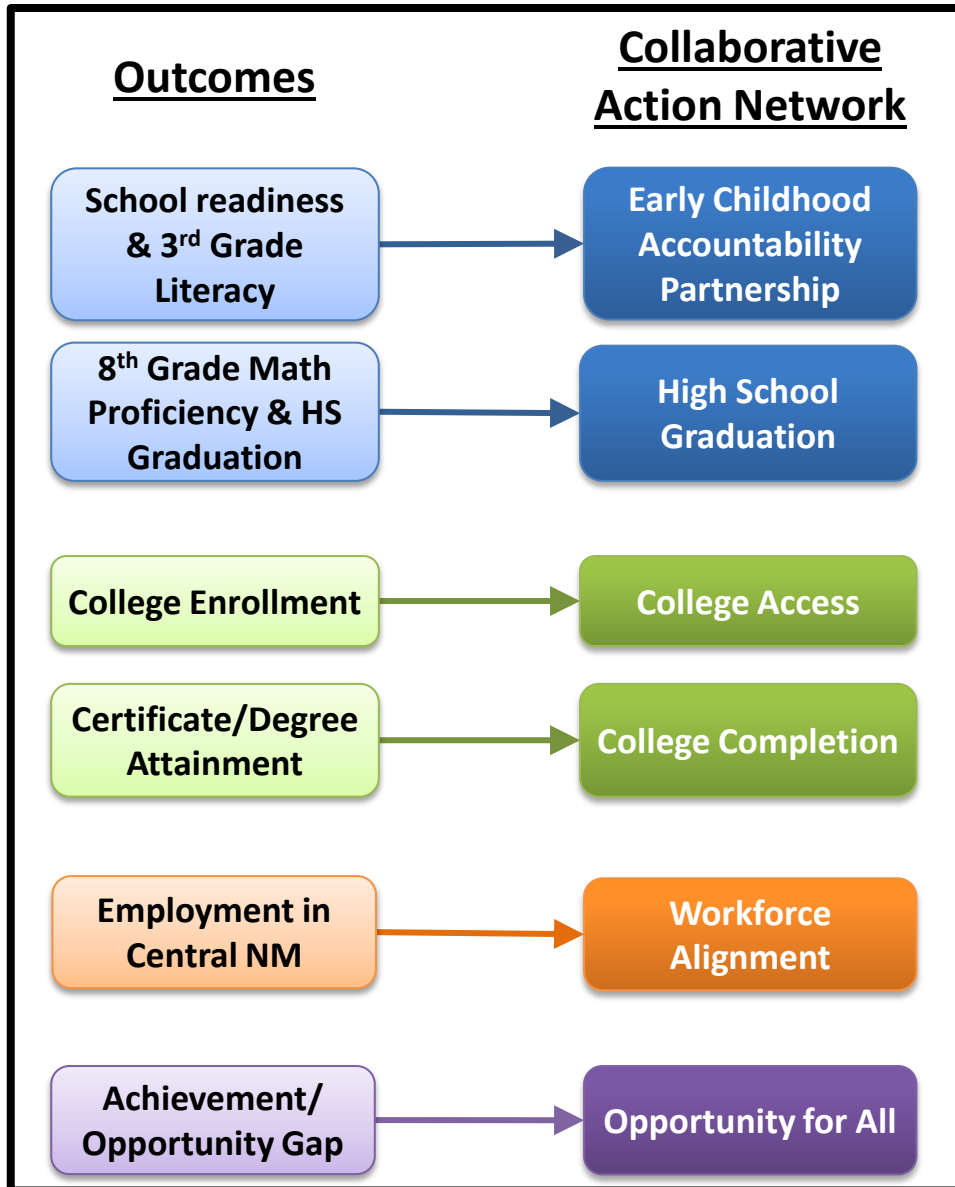


Changing Outcomes Through Collaborative Action

- **Develop and Implement Collaborative Action Plans**
 - Convene **Collaborative Action Networks** to use population-level and student-level data to develop and implement action plans aligned to one or two core outcomes.
- **Solicit Community Input and Enlist the Community as Advocates**
 - Convene **Community Support Councils** to solicit input about the priorities for collaborative action and, over the long term, to enlist community members as advocates for the work.
- **Support Alignment**
 - Identify and spread the word about concrete steps that businesses, organizations, and individuals can take to align their activities to the goals of *Mission: Graduate*.



Collaborative Action Networks



Network Responsibilities

- **Develop an action plan** to make improvements on a given outcome;
- Incorporate **best and promising practices** into the action plans;
- Use local data to **identify effective practices** that can be scaled;
- Convene project teams to **implement the plan**; and
- **Leverage new and existing resources** to adopt and adapt data-informed practices.

Collaborative Action Network Launch Plan

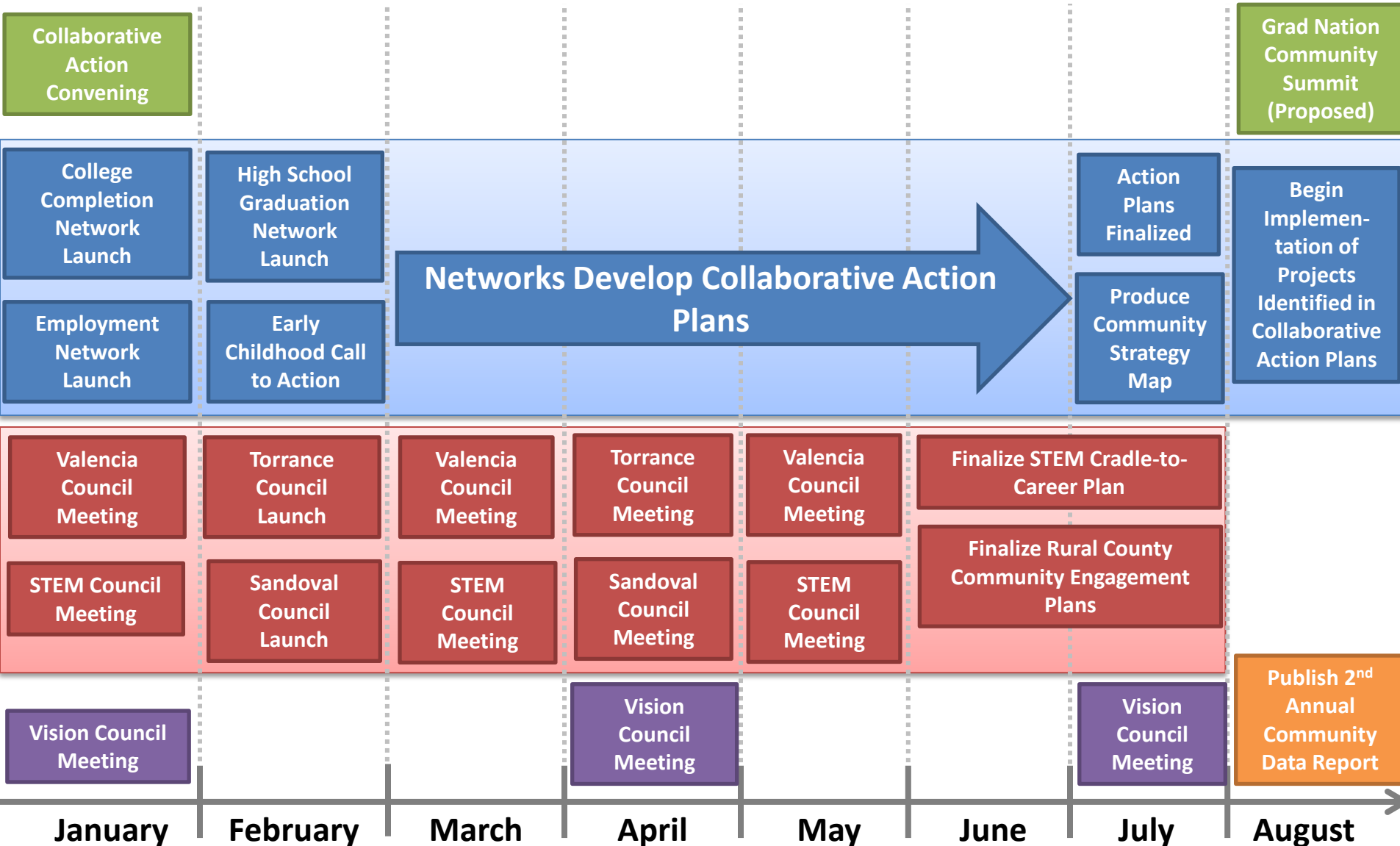
Collaborative Action Network	Outcome Indicators	Convening Partner	Proposed Launch Date	Vision Council "Champions"
Early Childhood Accountability Partnership (ECAP)	<ul style="list-style-type: none"> Kindergarten readiness 3rd grade reading 	ECAP	February 27	
High School Graduation Network	<ul style="list-style-type: none"> 8th grade math proficiency High school graduation 	New Mexico PBS (proposed)	February 3	
College Completion Network	<ul style="list-style-type: none"> College retention Certificate/degree attainment 		January/February (Date TBD)	
Employment Network	Employment in Central New Mexico	Intel	January 23	
College Access Network	College enrollment		TBD No later than Fall 2014	
Opportunity for All Network	Opportunity gap		TBD No later than Fall 2014	



Community Support Council Launch Plan

Community Support Council	Convening Partner(s)	Proposed Launch Date
Data and Research Council	Center for Education Policy Research	Existing
Marketing Council	United Way of Central NM	Existing
Area Rotary Council	Area Rotary Presidents Group	Existing
STEM Education	TBD	Existing
Valencia County Council	TBD	Existing
Sandoval County	TBD	Winter 2013
Torrance County	TBD	Winter 2013
Bernalillo County	TBD	Winter 2013
Parents and Families	TBD	Winter/Spring 2013
Youth	TBD	Winter/Spring 2013
Educators	TBD	Winter/Spring 2013
Faith-Based	TBD	TBD
Nonprofits	TBD	TBD
Policy	TBD	TBD

2014 Timeline



Community Strategy Map Template

Result	Excel and Succeed from Early Childhood Through High School				Graduate with a Postsecondary Degree or Certificate		Enter a Career of One's Choosing	Eliminate the Opportunity Gap
Outcome Indicator	Kindergarten readiness	3 rd Grade Literacy	8 th grade Math Proficiency	High School Graduation	College Enrollment	College Retention & Certificate/Degree Attainment	Employment in Central NM	Opportunity Gap
Data Target	# or % by 2020	# or % by 2020	# or % by 2020	# or % by 2020	# or % by 2020	# or % by 2020	# or % by 2020	# or % by 2020
Strategies								

See Handout for Example



Next Steps

- **Participate in a Network**
 - Keep an eye out for an email from us next week inviting you and other individuals from your organization to participate in one of our Collaborative Action Networks.
 - There is a simple form that we will be asking everyone to complete, which fully outlines the expectations for participation.
- **Participate in a Community Support Council**
 - If time does not allow, consider joining or helping to form a Community Support Council.
- **Align Support Within Your Organization**
 - Who are the people with the expertise and authority to help contribute to the development of action plans?



For More Information

Angelo J. Gonzales, Ph.D.

Executive Director

Mission: Graduate

angelo@missiongraduatenm.org

505-903-6475

<http://MissionGraduateNM.org>

